

# Instructions Tyre Changer EVO2

## Image:



## Description:

1. Carefully position the removed wheel on the tyre changer

Place centering cone on shaft to centre wheel



2. Align the feet so that the rim / tyre are stable on the device



3. Remove the valve with a valve extractor to deflate the tyre



Valve Tool optional available

4. Align the pressure paddle with approx. 0.5 cm clearance to the edge of the rim. Insert extension lever



Rim Protector optional available

5. Press the tyre bead off the rim. Turn the wheel 90 degrees and repeat the process until the entire tyre bead is released from the rim

Take care to keep the rim centered on the device!

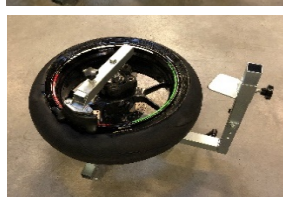
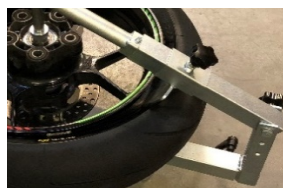
!! ATTENTION TAKE CARE NOT TO DAMAGE THE RIM !!

6. Lubricate the rim base with assembly paste or spray



Assembly Spray oder Paste optional available

## Image:



## Description:

7. Turn wheel over

8. Press the tyre bead off the rim. Turn the wheel 90 degrees and repeat the process until the entire tyre bead is released from the rim

9. Lubricate with the assembly paste after breaking the bead

10. Fold back the removal tool and remove the extension lever.

Place mounting arm on shaft

11. Insert locking pin to avoid the wheel turning

Important: Locking pin must rest on the wheel

12. Mounting head must be flush with rim edge

# Instructions Tyre Changer EVO2

## Image:



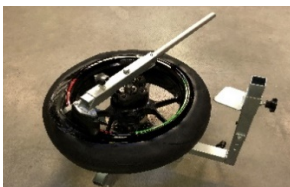
## Description:

13. Using the tire lever, pull the tire bead over the mounting head



Tyre Lever optional available

14. Insert the extension lever into the mounting arm



15. Guide the mounting arm counterclockwise around the entire wheel, this requires some force. Tyre bead will slip over the rim



16. Tyre bead is detached from the rim



17. Repeat the process with the tyre lever for the second tyre bead. Insert the mounting bar between the mounting head and the tyre bead and pull it over the mounting head. After one revolution, the tyre is detached from the rim and can be removed. Dismantling is complete



18. Before installing the new tyre, lubricate both tire beads with mounting paste. Push the tyre over the rim. First tyre bead can be slipped over by hand

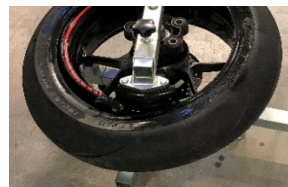


## Image:

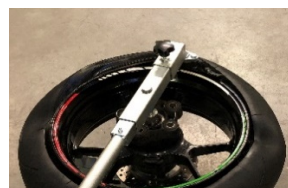


## Description:

19. Tip: yellow or red dot is the spot with the lowest weight. Use the balancer to determine and mark the highest mass of the wheel. Then align the colored dot at the marked position



20. Press in the second tyre bead as far as it goes by hand. Let tyre run across the mounting head



21. Insert the extension lever into the mounting arm. Turn the mounting head anticlockwise over the entire wheel. Hold the tyre with your other hand so that it does not slide off the mounting head



22. The last section of the tyre bead has to be pulled over the rim with increased force



23. Screw in the valve insert again. inflate tyre with air until both beads pop, the correct fitting of the tyre on the rim is completed



24. Finally, the balancing is done with the balancing block. Illustrated description and a video can be found on our website



Balancer optional available